



Marine Protected Areas in Northern Ireland's Inshore Region

Maxime Sizaret

Causeway Coast and Glens Heritage Trust
on behalf of DOE Marine Division



Marine Conservation Zones (MCZs)

- New approach to protecting national features:
 - Stakeholder led
 - Marine Act requires social, economic and cultural issues to be taken into consideration
 - Management options for each site will be created
 - requiring input from relevant stakeholders to enable meaningful assessment to be carried out
 - Overall network will have an Impact Assessment
 - these will be filtered down into individual IAs for each proposed MCZ
- Locations and boundaries maybe adjusted to minimise impact on socio-economic activity whilst still meeting the Conservation Objectives.

What will be protected by MCZs?

MCZs will protect nationally important marine species, habitats and geological features, based on identification and designation from lists of Priority Marine Features. These lists include information from:

- OSPAR List of Threatened and/or Declining Species and Habitats (OSPAR T&D);
- The UK Biodiversity Action Plan List (UK BAP);
- Northern Ireland List of Priority Habitats and Species (NI Priority);
- Wildlife and Natural Environment Act (Northern Ireland) 2011 Schedule 5 (WANE);
- Northern Ireland Species of Conservation Concern (SOCC), and
- Nationally Important Marine Features (NIMF).

The PMF list was reviewed in 3 separate workshops and also internally reviewed to produce a list of habitats and species that are not adequately protected within the existing MPA network – proposed MCZ features (pMCZ)



Proposed MCZ features - Habitats

Habitat	Component Habitats
Deep sea bed	Cold water coral reefs
Low energy circalittoral (subtidal) rock	Estuarine rocky habitats
Sublittoral (subtidal) biogenic reefs	Horse Mussel (<i>Modiolus modiolus</i>) beds
	Blue Mussel (<i>Mytilus edulis</i>) beds
	Brittlestar beds
Sublittoral (subtidal) muds	Mud habitats in deep water
	Sea-pen and burrowing megafauna communities
	Blue Mussel (<i>Mytilus edulis</i>) beds
	Brittlestar beds
Sublittoral (subtidal) sands	Circalittoral sand and gravel communities
	Tide-swept channels
	Native oyster (<i>Ostrea edulis</i>) beds
	Blue Mussel (<i>Mytilus edulis</i>) beds
	Brittlestar beds
Sublittoral (subtidal) mixed sediments	Brittlestar beds



Proposed MCZ features /limited Mobility Species

- *Arctica islandica* (Ocean Quahog)
- *Atrina fragilis* (Fan Mussel)



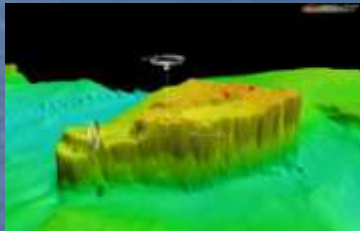
Proposed MCZ features: Highly Mobile Species

- *Dipturus batis* (Common Skate)
- *Cepphus grylle* (Black Guillemot)

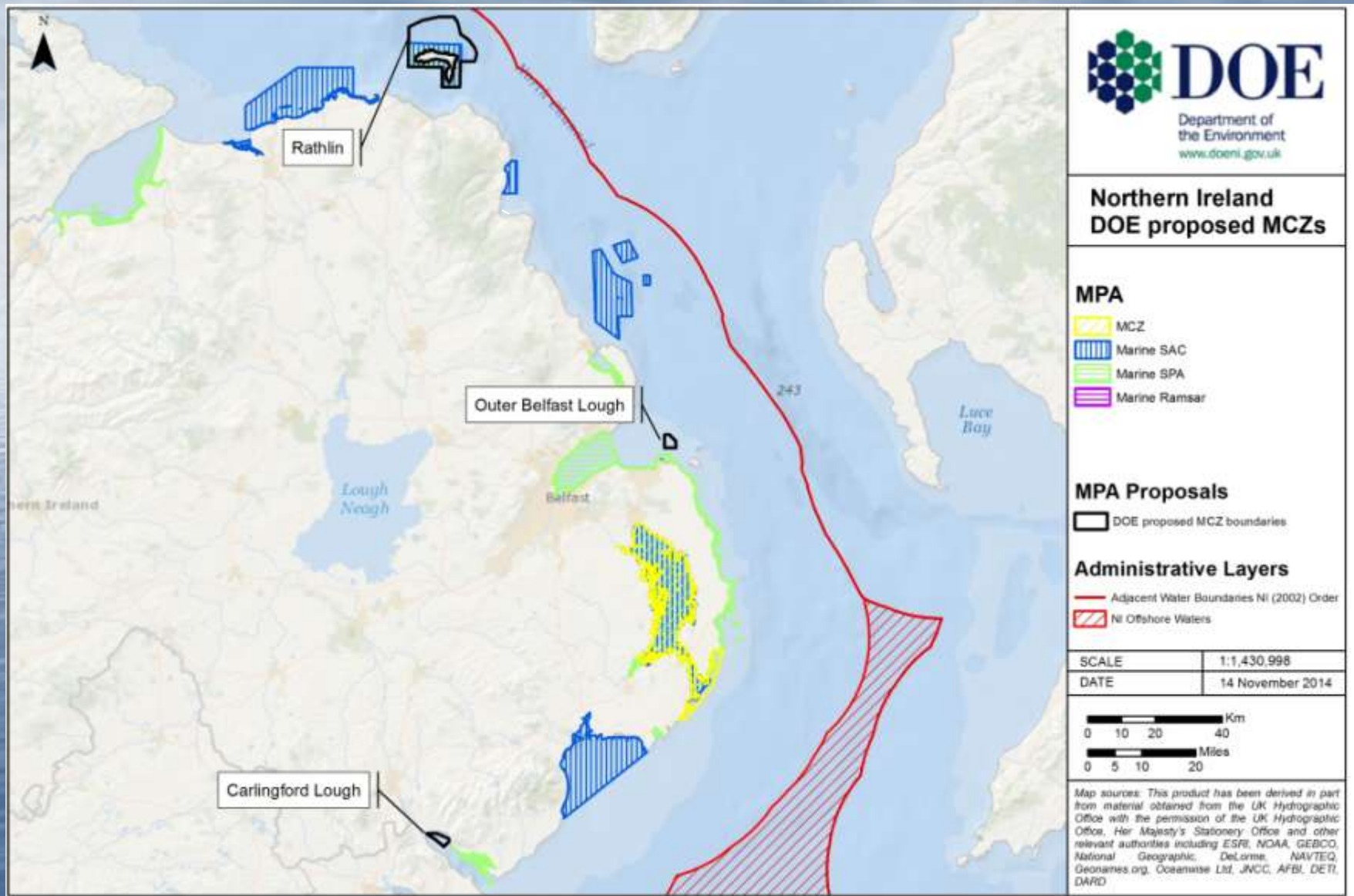


Geological/geomorphological features

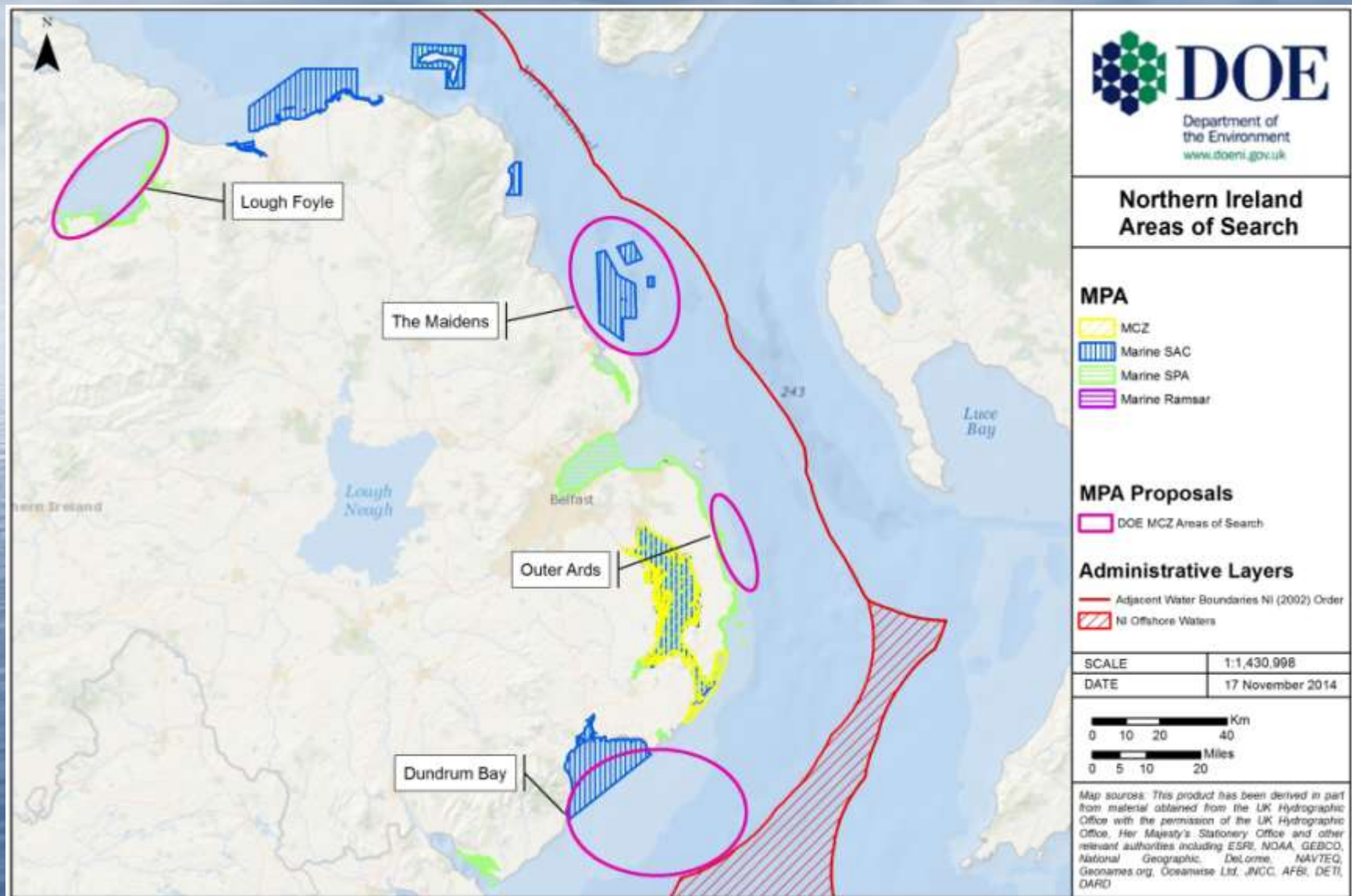
- Glacial process features
- Marine process features
- Mass movement features
- Features indicating past change in relative sea level
- Geological process features
- Seaward extension features



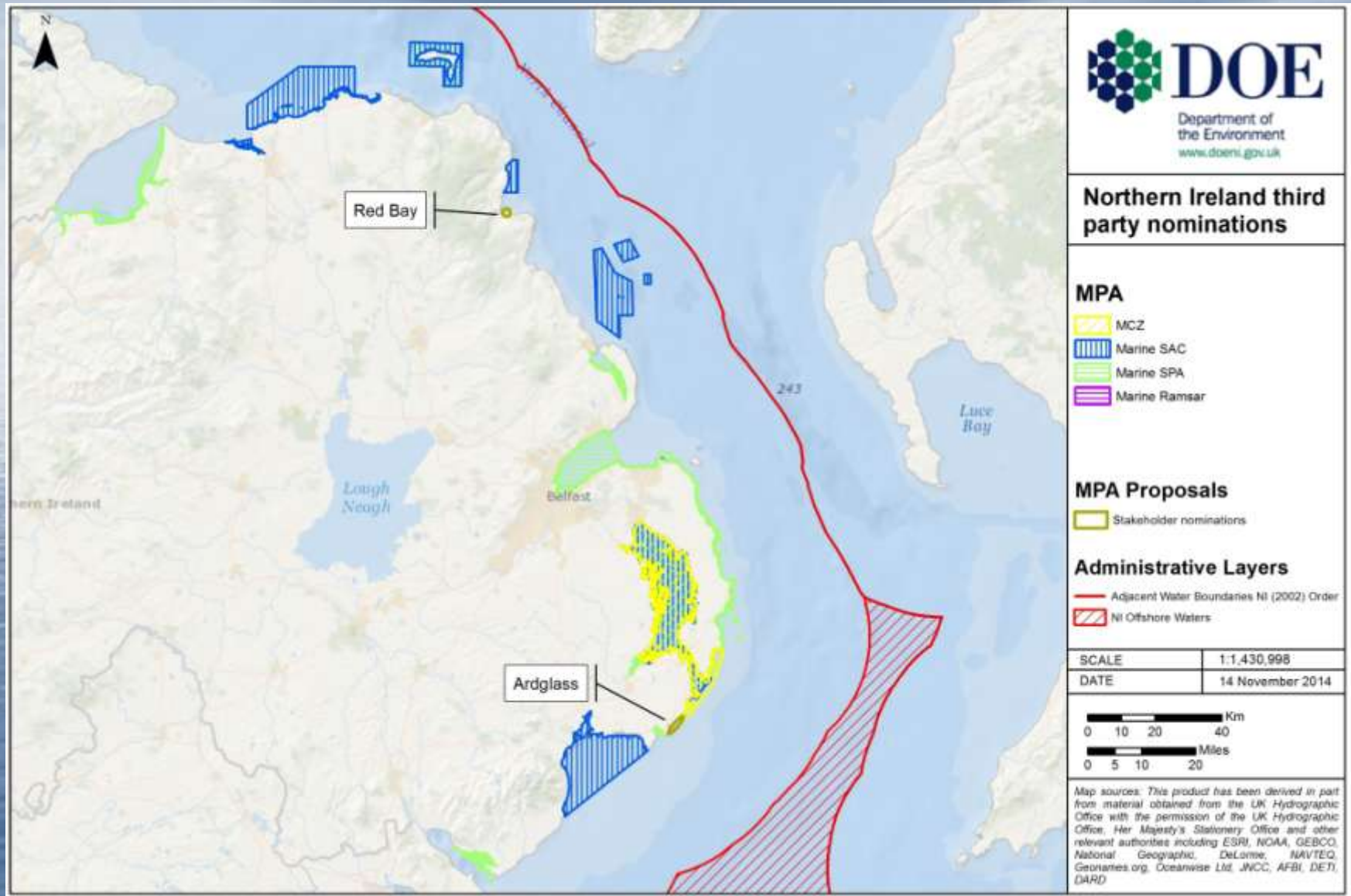
DOE proposed MCZs



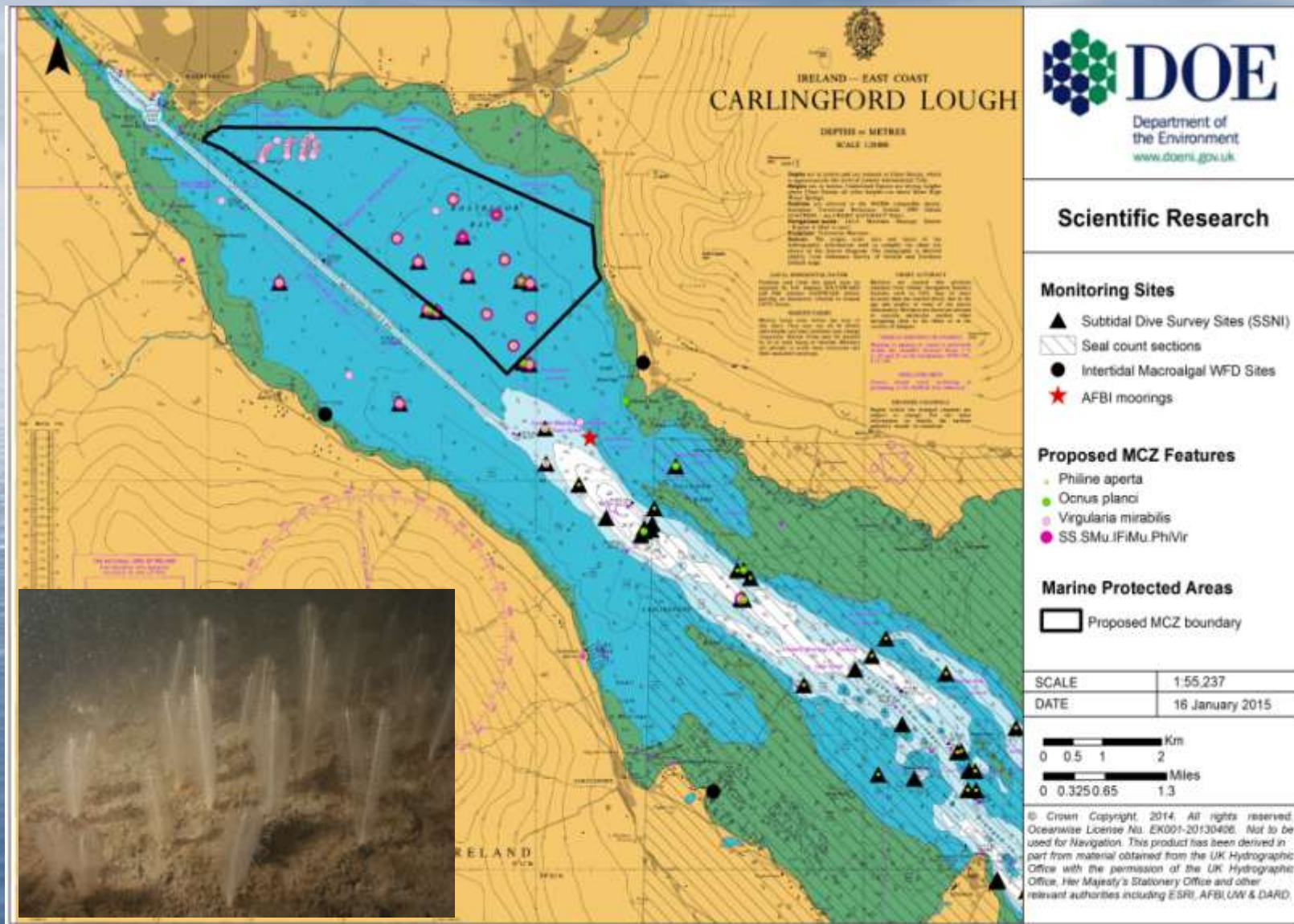
DOE Areas of Search



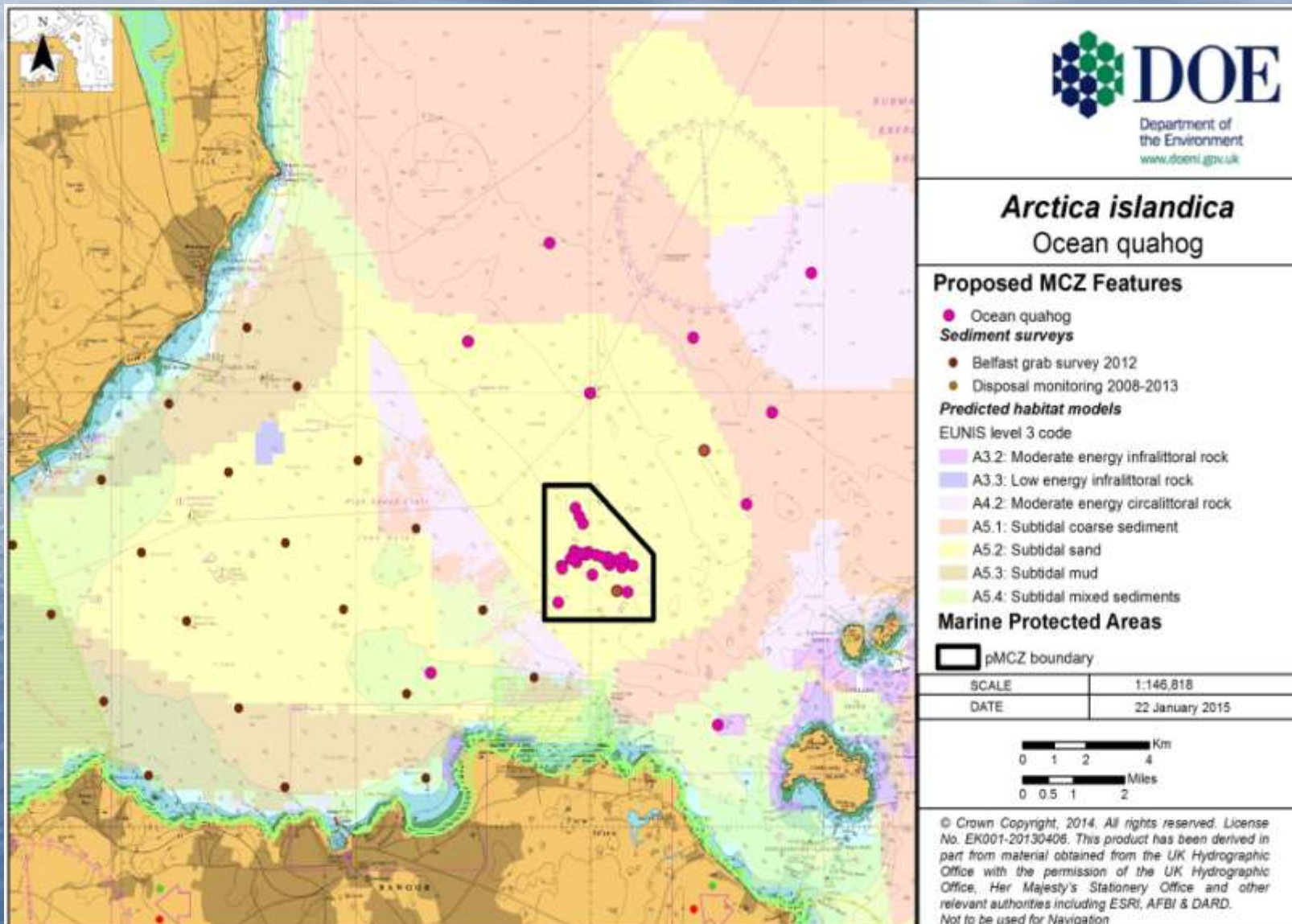
Stakeholder Nominated Areas of Search



Carlingford Lough pMCZ



Outer Belfast Lough pMCZ



Arctica islandica (L.) 1767

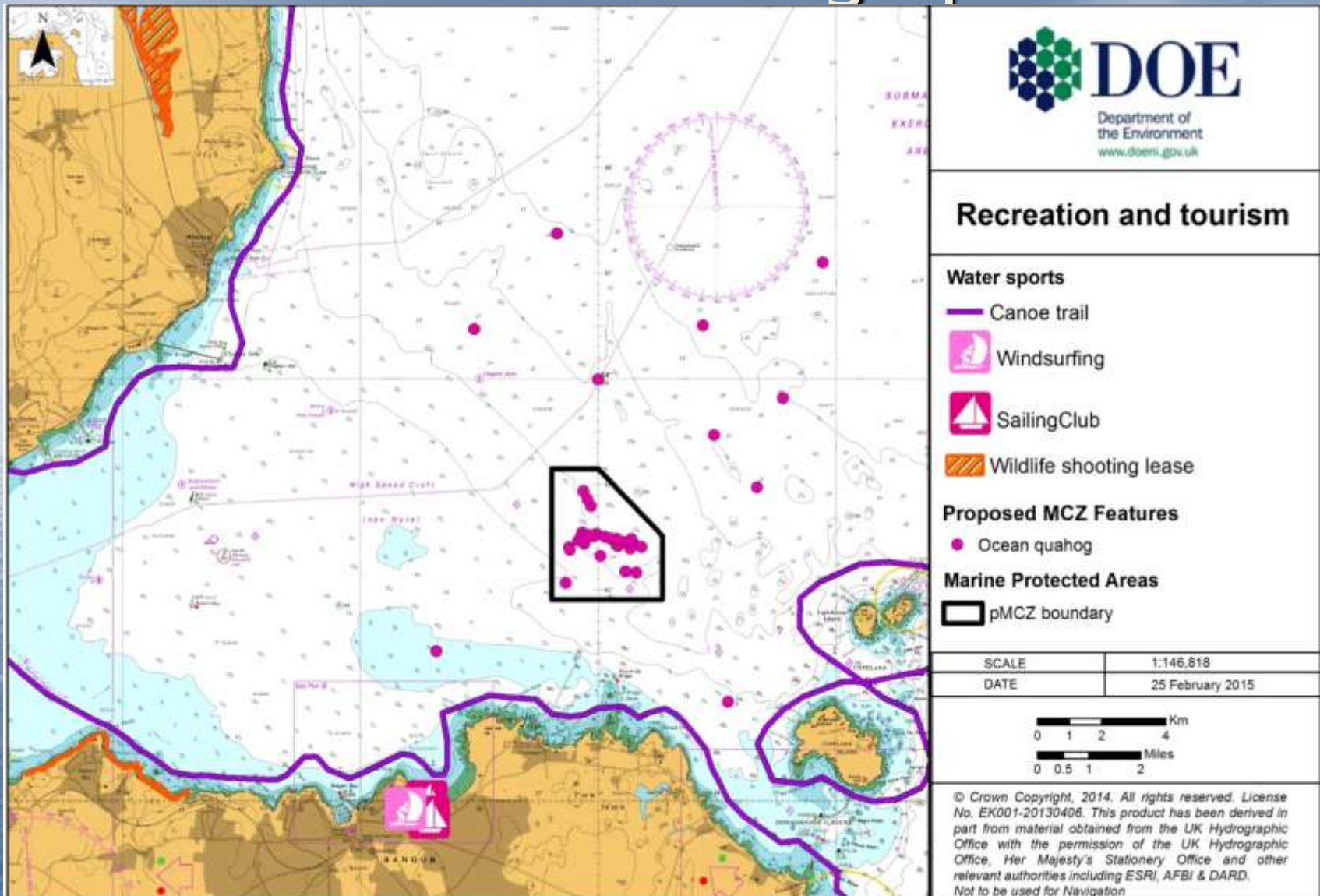
•When this animal was born, Henry VII was King of England, James IV was King of Scotland, Christopher Columbus had only just discovered America in 1492

•A team from Bangor University plucked the mollusc from 262-feet-deep (80-meter-deep) waters off the northern coast of Iceland in 2006

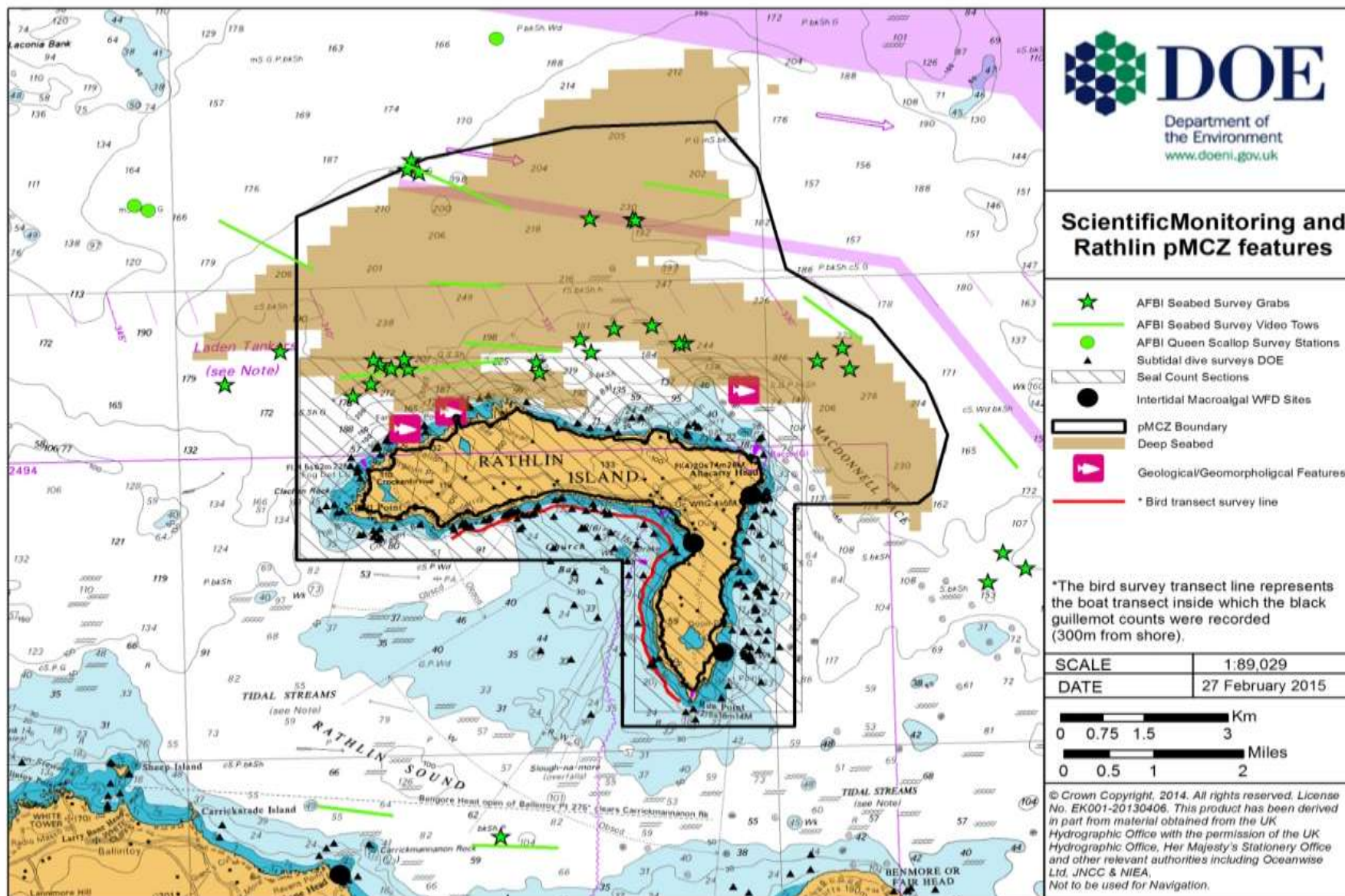


507 years old

Outer Belfast Lough pMCZ



Rathlin pMCZ



Red Bay pMCZ

Seagrass Flowering plants



Seagrass / eel grass *Zostera marina*

© Crown Copyright, 2014. All rights reserved.
License No. EK001-20130406. This product has
been produced from material obtained from the
UK Hydrographic Office with the permission of the
UK Hydrographic Office, Her Majesty's Stationery
Office and other relevant authorities including ESRI.

Management Options

- Legislation places clear responsibilities on regulators with regard to site protection
- Engagement with public/interested parties before implementation
- Measures expected to apply to those activities identified as having a negative impact on designated features
- Risk prioritised approach

